

Two Octave Upright Bass Major Scales

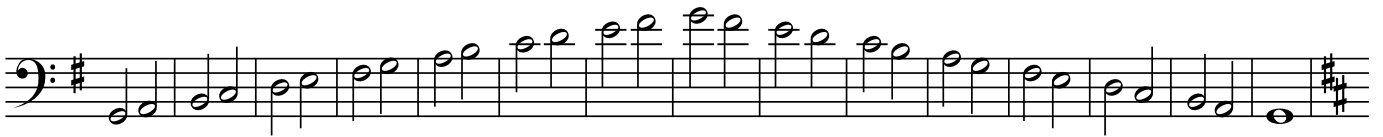
Fingerings by Klaus Trumpf

Copyright © 2005 by Ted Burmas

2 0 12 01 41 42 4 0 12 32 10 42 41 41 02 10 2



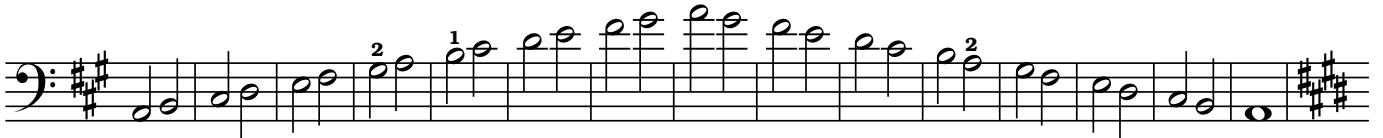
2 0 12 01 40 14 14 14 34 14 14 10 41 02 10 2



01 40 14 24 14 13 12 32 13 1 4 14 24 10 41 0



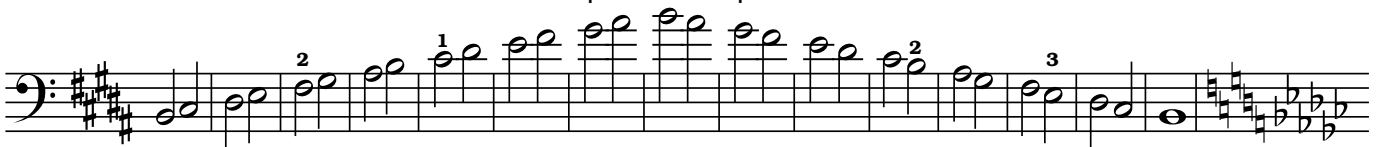
01 40 14 24 12 41 42 32 41 42 14 24 10 41 0



01 40 14 24 12 41 42 42 41 42 14 24 10 41 0



14 24 14 24 14 14 p1 21 p4 14 14 24 14 24 1



14 24 14 24 12 41 42 42 41 42 14 24 14 24 1



4 3 2 1 2 3 4

14 24 14 24 14 13 12 32 13 1 4 14 24 14 24 1

14 24 14 01 42 41 42 32 41 42 41 04 14 24 1

14 24 14 24 1 3 13 12 32 13 13 14 24 14 24 1

14 01 40 24 14 14 p 1 2 1 p 4 14 14 20 41 04 1

14 01 40 24 02 41 42 42 41 42 04 20 41 04 1

Notes:

- Focus on intonation, tone quality and tone control
- Left-hand fingerings are in large font above each note
- Strings are indicated by numbers in small font where 1=G, 2=D, 3=A and 4=E
- Whenever the scale high register notes end in "1 2 3" it is preceded by "1 3" (except for the C scale which uses a harmonic instead of a "p")
- The only scale with the "1 3 1 3" pattern is Eb
- Only the B and the Bb scales have a "1 4 1 4 p 1 2" pattern
- Only the A and the Ab scales have a "2 4 1 4 2 3" pattern
- The double "1 4 2 4" pattern is used by the Ab, B, Gb, Db, and Eb scales. However, the Ab & Db scale's "1 4 2 4" patterns "climb" in the opposite direction from these other scales.